



"SILENTMASTER" PLATFORM TRUCK

- Super smooth running non-marking castors reduce rolling resistance and provide enhanced mobility and maneuverability.
- Mounted on two fixed castors at the handle end and two swivel castors in the front.
- Reduces the amount of effort required to move loads by up to 30% against conventional castors.
- Durable injection molded plastic platform fitted with slip-resistant pads to aid load retention.
- Each truck is fitted with corner buffers and has recessed carrying handles.
- Locking brake standard with the DSK-301B2 model.
- Powder coated folding handle allows truck to fit in tight storage spaces when not in use.
- Load Capacity - 660lbs. (300kg)
- L x W x H - 35" x 24" x 8.25"

Smooth running "SILENTMASTER" castors require *up to 30% less effort* compared to conventional castors.

The world's first Dual Brake System Platform Truck

Easy operating brake system from Nansin "NANSIN B2 BRAKE SYSTEM"

Will ensure a SAFE operation when transporting loads!

Pressing down the ON pedal engages the brake.



ONE STEP OPERATION

Pressing down the OFF pedal disengages the brake.



INTERCONNECTING PLASTIC DOLLY

- Dollies may be linked length-wise and width-wise in order to provide for a larger platform.
- A single dolly can take one 23" x 15" container or two 15" x 11" containers.
- The silent, smooth running and tully enclosed non-marking, ball bearing 3" diameter swivel castors with reduced rolling resistance makes it easy to move loads
- Up to 10 dollies can be stacked together when not in use.
- L x W x H 23" x 15" x 4.7"
- Weight - 7.5lbs.
- Load Capacity - 330lbs. (150kg)



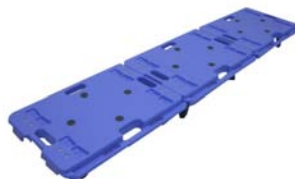
Ribbing on underside gives the dolly strength



Dollies simply click together.



Dollies connected four square.



Dollies connected lengthways.



PD-406-3E

Can be stacked 10 high.